

HISTORY OF THE ALLEN HERITAGE VILLAGE GARDENS



Compiled by
Marge Bryan
April 2023

INTRODUCTION

The Allen Heritage Village was developed by the City of Allen in cooperation with Allen Heritage Guild. It is a collection of Allen's oldest remaining homes, outbuildings and a preserved church that were relocated to the site in Allen's old residential area to form a park where guests can visit and learn about Allen history.

The Allen Heritage Gardens were started in 2010 in partnership with the City of Allen, Allen Garden Club, Keep Allen Beautiful, and the members of Rooted in the Past (CCMGA). From the beginning the Gardens have been based on Earth Kind principles and practices in planning, planting, and maintaining the gardens. Efforts are made to preserve, protect and contribute to a healthy and sustainable environment. These elements are incorporated in landscape design, plant selection, soil preparation, planting and mulching.

Even though St. Mary Church is owned by the Allen Heritage Guild, it has always been considered a part of the Allen Heritage Village. The first gardens ever planned and planted at the Village were those at St. Mary by the Allen Garden Club members 2006. This was long before the other houses on the city owned piece of the Village were restored.

The first structure restored on city property was the Allen Christian Church so it was naturally the first structure to be landscaped. The Collin County Master Gardeners group Rooted in the Past was contacted to see if they would help in planning the landscaping for the Church. The group agreed and developed a plan for the church which also included a landscape plan for the oval. The church plan was approved however the city did not approve the oval plan.

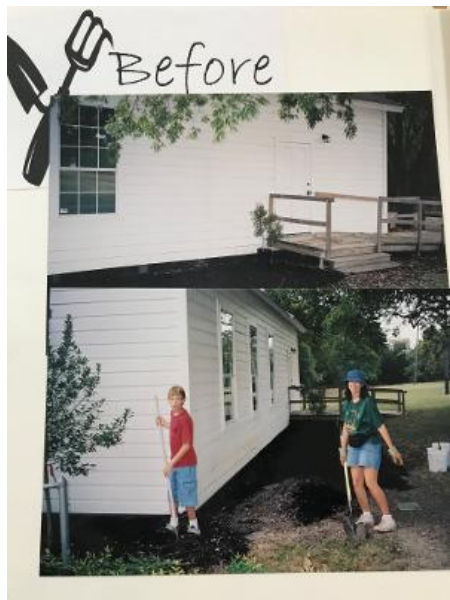
It was about this same time that Dr. Greg Church, Collin-County Texas A&M Agrilife Extension Service, suggested that a new CCMG project be created to oversee the CCMG work being provided in the gardens at the Allen Heritage Village. Marge Bryan was selected as the first Project Lead.

The restoration of the ACC was followed by the Bolin House, the Lynge House and the Wetsel House in that order. Landscaping of these houses was planned and implemented by the new Allen Heritage Project with support by the Allen Garden Club, Allen Heritage Guild and other volunteer groups including the Boy Scouts, Allen High School ROTC, Keep Allen Beautiful, and others. The gardens will continue to be a partnership between CCMGA, the City of Allen Parks and Recreation, Allen Garden Club and the Allen Heritage Guild.

ST. MARY BAPTIST CHURCH

St. Mary Church was built in 1887 and was organized as an African-American Baptist congregation until 2001. It was donated to the Allen Heritage Guild in 1999 by Reverend George Anderson and a total restoration of the church began in 2001 by the Allen Heritage Guild under the direction of Paula Ross, president of the Allen Heritage Guild.

The Gardens were installed 2006 by the Allen Garden Club and Boy Scouts. Plants for the new beds were donated by the City of Allen and the Allen Garden Club members.



ALLEN CHRISTIAN CHURCH

The Allen Christian Church was built in 1918 and moved to the village in 2002 by the City of Allen. Landscaping plans for First Christian Church were designed by Rooted in the Past, a group of Master Gardeners that focus on low maintenance and selection of heirloom plants that would reflect that period. This CCMG group is no longer active.

Heirloom roses were selected to reflect a subdued palette with fragrance as a feature. The City of Allen's architects Brian Bristow and Matt McComb were also involved in design. Earth kind Roses, Skullcap, Daylilies, Iris, Rose of Sharon, Hydrangea and Bridal wreath and native trees for color and interest were selected for this historic church. The installation was completed in 2011.

The Rooted in the Past Landscaping plan follows on the next page:





Allen Heritage Village

COLLIN COUNTY MASTER GARDENERS

'ROOTED IN THE PAST'

Landscaping Plans for First Christian Church,

Entry Oval

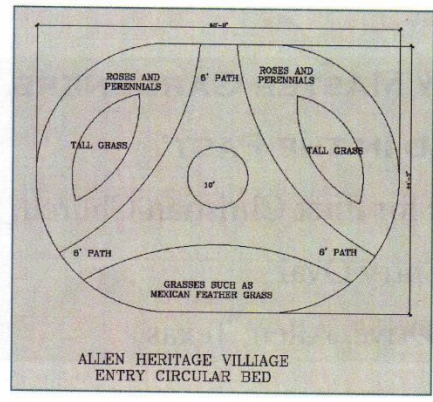
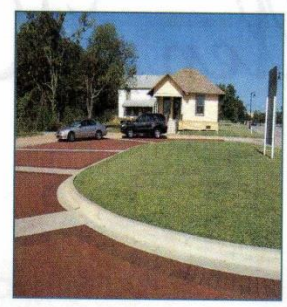
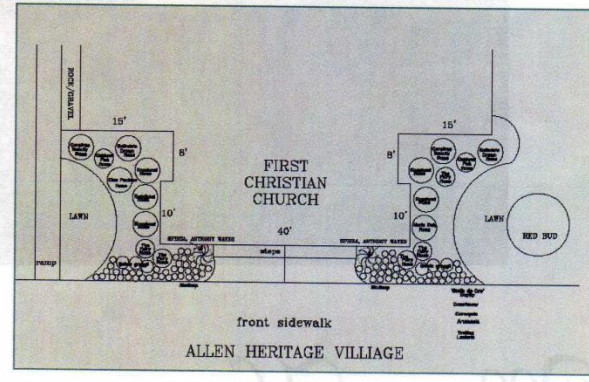
St. Mary Drive, Allen, Texas

Overview

Plans for the First Christian Church focus on low maintenance selections in a subdued palette at moderate heights with fragrance as a feature. Earthkind® Roses, skullcap and daylilies for perennials are featured along with shrubs of glossy abelia, oakleaf hydrangea, rose of sharon and bridalwreath. Native trees need to be added to plan for succession of aging hackberries and to add color and interest.



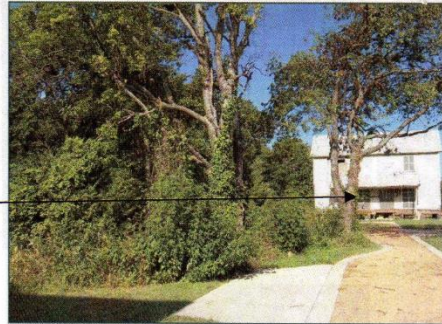
The entry oval features a dramatic pathway accessed from the curbless entries on St. Mary Drive as well as the banded pavers directly in front of the Christian Church. The center features a circle unplanted for the placement of an artist's rendition of the Heritage Guild's driving tour logo or perhaps an armillary, executed in rustic metal.



PLAN SPECIFICS FOR CHURCH AND ENTRY OVAL

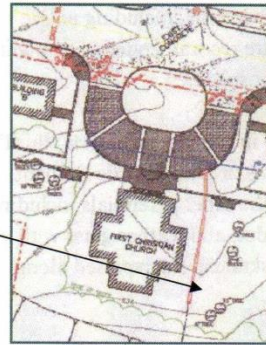
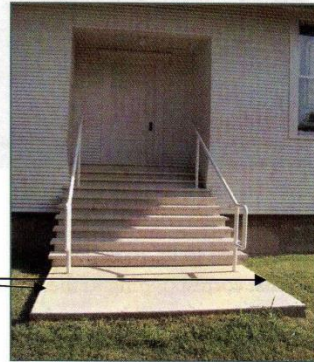
Trees: For succession of shade and color accents, plan for eventual loss of aging and decaying hackberry trees on both east and west sides of Church. Stagger red oaks just west of eastern row of hackberry trees to shade church in morning. Avoid planting in straight lines. Bur Oak to replace hackberry on west side of church nearest sidewalk.

Smaller, ornamental trees should be planted on the west side of the church for color, contrast and form. Choose eastern redbud, and as an evergreen, native juniper. Along the south (back) side of church, near the creekside native plants, add Eve's Necklace for spring flowers, later seedpods. For winter interest, add native possumhaw holly for red berries in winter. Perfect for Christmas weddings! Also consider native hawthorn as accent trees in sunny or edges for spring bloom.



Shrubs for Accents:

Back of Church: on each side of the staircase, plant one glossy abelia for color, evergreen contrast and sweetly scented flowers. Along the creekside, plant coralberry as a low, native shrub. Along the drainage area on the side nearest the church, plant bridalwreath for spring color and to screen this depression. On the east side of the same drainage area, plant oakleaf hydrangea for beautiful color from flowers and fall foliage. Brides will identify with the abundant white and creamy flowers. See plant list on page 6 for specifics.

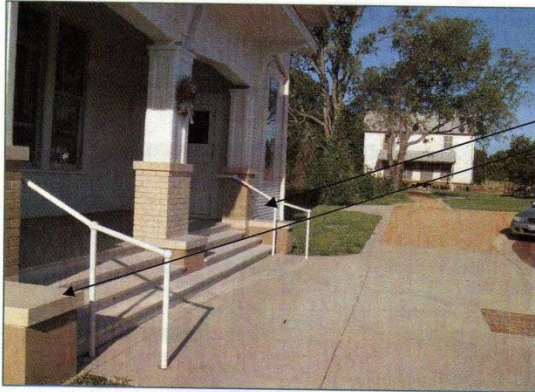


Additional plants to consider:

Sambucus (elderberry), spring blooming bulbs (narcissus) ('Early Pearl', 'Thalia') Mutabilis roses out in full sun as flowery accents all summer long.



Narcissus 'Thalia'

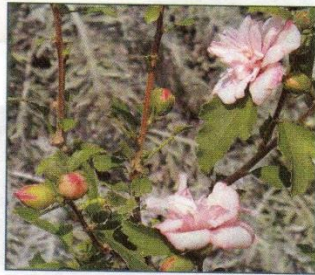


Front of church (see attached plan)

Consider providing containers for events that would hold potted plants to decorate the entry stoops but would not require maintenance or watering. They would be stored inside when not in use, or could hold artificial plants indoors in the church.

The areas designated for benches: To reduce maintenance and enhance the experience for seated visitors, plant these areas to eliminate turf, add fragrance and color. Suggest 'Rose of Sharon' [*hibiscus syriacus*] or glossy abelia, with mulch. Edging should be installed to separate from turf.

"Double Pink"
Rose of
Sharon shown
at right



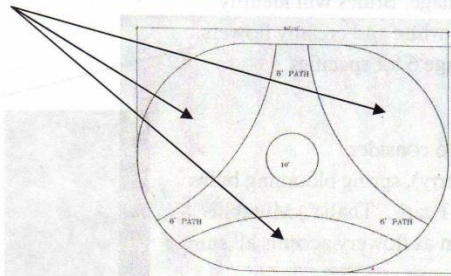
Entry Oval:

This area has been designed to be accessible from three entry points, corresponding to the entry to the church and the two curbless areas along St. Mary Drive. The center is left open in the design to feature a sculpture or accent piece. Roses, surrounded by low maintenance perennials, including native bunchgrasses, are recommended. See plant list on page 6 for specifics.

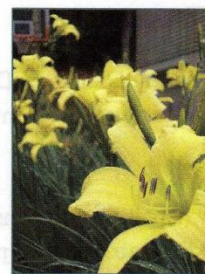
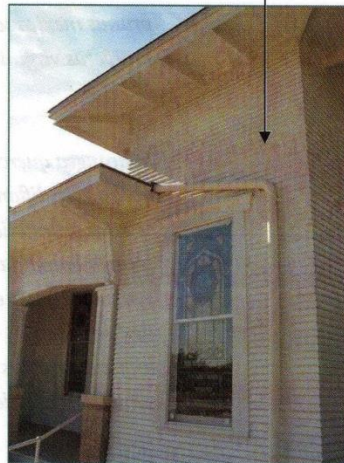
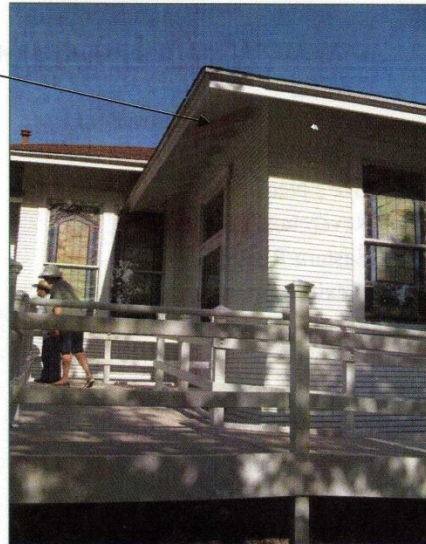


Consider a rose in the center of each "third", such as Mutabilis or Duchesse de Brabant, surrounded by the other perennials including veronica, lavender, and feather grass with candy tuft and skullcap interspersed along the outer edges.

See separate larger version of this drawing for more detail.



Drainage issues on east and rear corner:
 We suggest adding a downspout pipe like the one on the front west corner to drain roof water to the ditch to the east. Rock could be added along the church's foundation on the east to deal with erosion from dripline. Consider installing an era-appropriate cistern to collect rainwater as would have been done which could deal with this issue and supplement irrigation water for new plants.



'Hyperion'



Ramp and drainage issues: To deal with roofline runoff, rock could be added along the foundation to match what was used in the drainage ditch or if a pipe is used to direct roof runoff to the rear, daylilies (tall type such as 'Hyperion' could be planted in this area.

This area will be a small curved arc of turf with roses as shown on the plan. See separate larger version of plan for more detail.

PLANT LISTS

COMMON NAME or specific hybrid(s)

latin (botanical) name

TREES

Red Oak (Texas red oak)
 Bur Oak
 Eve's Necklace
 Reverchon Hawthorn
 Eastern Redbud
 Mexican plum
 Eastern red cedar

quercus shumardi or texana
quercus macrocarpa
sophora affinis
craetagus reverchonii
cercis canadensis
prunus mexicana
juniperus virginiana

SHRUBS:

Oakleaf Hydrangea
 Glossy Abelia
 Bridalwreath Spiraea
 'Anthony Waterer' Spiraea
 Coralberry
 Possumhaw holly
 Rose of Sharon 'Diana' or 'Double Pink'
 Elderberry (background plant only)

hydrangea quercifolia
abelia grandiflora
spiraea prunifolia
spiraea bumalda 'Anthony Waterer'
symphoricarpos orbiculatus
ilex decidua
hibiscus syriacus
sambucus canadensis

ROSES:

The Fairy (small pink blooms)	Belinda's Dream*	Carefree Beauty
Duchesse de Brabant (large pink blooms)	Else Poulsen	Marie Daly
Mutabilis large shrub, multi-color, long blooming		Knockout*

PERENNIALS:

Skullcap [choose pink or white to contrast]
 Veronica 'Sunny Border Blue'
 Germander
 Lavender [Spanish]
 Candytuft
 Mexican Feathergrass
 Rosemary (trailing type)
 Autumn sage
 Daylily 'Stella d'Oro'* (short) and 'Hyperion' (tall)
 Purple coneflower
 Coreopsis 'Moonbeam' or 'Zagreb' *

scutellaria drummondii
veronica sp.
Teucrium chamaedrys
Lavandula stoechas
Iberis sempervirens
stipa tenuissima
rosmarinus sp.
Salvia greggii
hemerocallis
Echinacea purp.
coreopsis verticilata

*indicates a modern hybrid

Landscape Plants for the Christian Church 2

West

Abelia Glossy(9) #3
Leropetalalum Chinese Plum Delight (4) #3
Fringeflower
Hydrangea Endless Summer (3) #3
Salvia Greggii (3) #1
Spirea Anthony Waters (1) #3
Knockouts (3) #2
Fairy (3) #2
Marie Daly #2
Old Blush #2

East

Abelia (6) #5
Leopetalum Chinese (4) #3
Spirea Anthony Waters (1) #3
Fairy Rose (3) #2
Marie Daly #2
Else Polsen
Knockouts (3) #2
Salvia Greggii (3) #1
Spirea (3) #2
Rose of Sharon Double Pink
Eastern Red Bud
Eve" Necklace sophora affinis

Entry Oval

Old Blush 2
Mutabulis
Germander (2) #1
Lavender Spanish (3) #!
Veronica (4) #1 sunny blue boarder veronica sp
Skullcap (4) #1 pink
Candy Tuff (7) #1
Feather Grass (2) #1 stipa tenuissima
Rosemary (2) #1 trailing

SOURCES, LINKS AND CONTACTS

TREES: Shades of Green, Frisco TX, Fannin Tree Farm, Southwest Nursery [Carrollton]

SHRUBS, PERENNIALS: Shades of Green, Calloways, Lowes, Bruce Miller Nursery

GRASSES: Bluestem Nursery, Shades of Green, Northhaven Gardens (www.nhg.com)

ROSES: To help choose varieties, see Farmers Branch EarthKind® Test Rose Garden;

Local nurseries can order what you need. (call for plant lists of available varieties)

Antique Rose Emporium in Independence, Texas (mail order and local nurseries carry their roses)

or Chamblee's in Tyler, Texas both carry extensive inventories of EarthKind® and old garden roses.

Contacts: Candace Fountoulakis, Collin County Master Gardeners: mgcollin@ag.tamu.edu

See aggie-horticulture website for photos of trees, shrubs and perennials. EarthKind® rose pages are also there for photos of rose varieties suggested. www.aggie-horticulture.tamu.edu Other links of interest can be seen on the Collin County Master Gardeners website, www.ccmgatx.org



'ROOTED IN THE PAST' COMMITTEE MEMBERS:

Candace Fountoulakis, Sandy Seiser, Pat Marquardt, Jan Madden,

Kathleen Rose Brooks, Pam Burnette, Theresa Griffin



THE BOLIN HOUSE

The Bolin house was built in 1930. This bungalow style house is used as a bridal parlor for weddings held in the Allen Christian Church and St. Mary Church.

The garden was a collected effort by personnel from CCMG, Rooted in the Past, Allen Garden Club and City of Allen in 2012. Beth DiGioia designed the herb garden and the Herb Society of America helped plant the herb garden. A trellis and a path near the herb garden were incorporated in the design. Planted in the herb garden are Rosemary, Oregano, Thyme, Lavender, Golden yarrow and Mexican marigold. Another Amethyst Wisteria was donated by Catherine Sieves to replace the Evergreen wisteria that died recently.

All antique roses were removed due to the Rose Rosette virus and were replaced with autumn sage. The Rose Rosette virus proved to be a major problem for the Village gardens resulting in removal of all the heirloom roses

Pomegranate trees were planted to give color to the garden. The On the left side of the house are Spirea and Abelia plants which bloom throughout the year. There are Carol berry that are still quite healthy in the back garden of the house. Bearded Irises were donated by some of Allen's old time residents.





Revised Landscape Plants for the Bolin House

Name	Size	Quantity	
Old Blush Rose <i>Rosa spp.</i>	5 gal	2	CV
Mutabilis Rosa <i>spp.</i>	2 gal.	2	CV
Fairy Rose <i>Rosa spp</i>		7	CV
Spirea Double Bridal Wreath <i>Spirea prunifolia</i>	#3	10	OS
Lady Stanley Althea Hibiscus syriacus (tree style) <i>Hibiscus suriacus</i>	5 gal.	1	OS
Crimson Barberry <i>Berbens thumbergii</i>	#3	4	OS
Glossy Abelia <i>Abelia x grandiflora</i>	#3	10	OS
Pomegranate <i>Punice granatum</i>	#3	3	OS
Sweet Bouquet <i>Viburnum</i>	#3	2	OS
May Night Sage <i>Salvia sylvestris</i>	#1	3	OS
Blackfoot Daisy	#1	3	OS
Wisteria Evergreen	#3	2	OS
Autum Fern	#1	3	OS

Gregg 972-442 -2206

OS Oakstreet

CV Chamberville Tree Farm

Herb Garden Plants for the Bolin House

Name	Size	Quantity
Rosemary Rosmarinus <i>affinis</i> Blue	1gal	2 OS
Tuscan Blue Rosemary African blue	1gal	2 OS
Lavender, <i>Lavendula purpurea</i>	1gal.	2 OS
Oregano, Italian <i>Origanumx majoricum</i>	1 Flat	1 NT
Thyme (Lemon) <i>Thymusx citriodorus</i>	1 Flat	1 NT
Mexican Marigold <i>Tagetes lucida</i>	1 Flat	1 NT
African Blue Basil <i>Ocimum basilicum</i>	1Flat	1 NT
Onion chives, <i>allium schoenoprasum</i>	1 Flat	1 NT
Green sardolona, <i>Sardololona virens</i>	1gal	4 OS
Bay <i>Laurus nobilis</i>	1gal	1
Golden Yarrow <i>Achillea Moonshine</i>	1gal	4 OS
Pineapple sage <i>Salvia elegans</i>		2

Oakstreet OS

North Texas 130 Blue Label NT

130 Brown Street

Wylie, Texas

972 442-2206

THE LYNGE HOUSE

The Lynge house was built in 1930. It was moved to the Village from the Allen Library property. The gardens were designed in 2012 by Denise Webre, president of the Allen Garden Club. The gardens were planted by Allen Garden Club members and CCMGA . City of Allen Keep Allen Beautiful provided and installed the irrigation.

The plants selected for the garden were dwarf Abelia, dwarf Nandina, pink Skullcap, Rose of Sharon, Russian sage, Oakleaf hydrangea, Bridal wreath and Matabillis rose. Denise and her boys built a trellis on the front corner of the house that had a Pinkie rose and a Carolina jasmine vine. Both had to be removed. A coral vine was planted in its place. It appears to be growing well.



LYNGE HOUSE LANDSCAPE IMPROVEMENTS

O.C. SPACING (MOST 1 GAL. PERENNIALS)

6" O.C. SPACING (MOST 3 GAL. SMALLER SHRUBS)

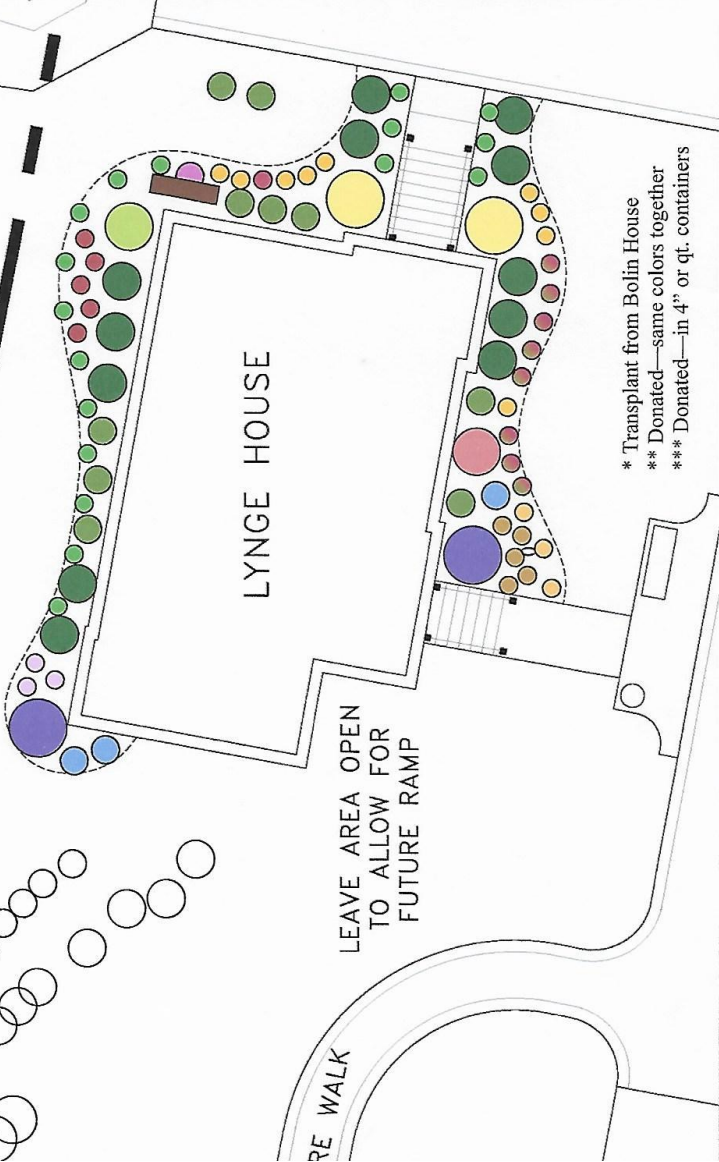
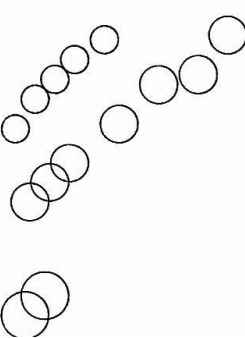
O.C. SPACING (3 GAL. SHRUBS)

DRAFT 8/24/2012

O.C. SPACING (LARGER SHRUBS)

O.C. SPACING (LARGER SHRUBS AND SMALL ORNAMENTAL TREES)

ST. MARY DR



	Dwarf Abelia
	Dwarf Nandina—Gulfstream
	Daylily **
	Rose of Sharon
	Oakleaf Hydrangea
	Rose 'Mutabilis'
	Pink Skullcap
	Black-eyed Susan***
	Russian Sage
	Bridal Wreath Spirea
	Peony
	Iris***
	Dwarf 'Hameln' Grass
	Liriope***
	Trellis for climbing rose
	'Old Blush' Rose**
	Autumn Sage

* Transplant from Bolin House
 ** Donated—same colors together
 *** Donated—in 4" or qt. containers

AUGUST 2012
 SCALE: 1/4" = 1'-0"

THE WETSEL HOUSE

The Wetset house is believed to have been built in the late 1870's. In 2003 it was moved from its location on the corner of Greenville Ave. and Exchange Parkway to its current location in the Village.

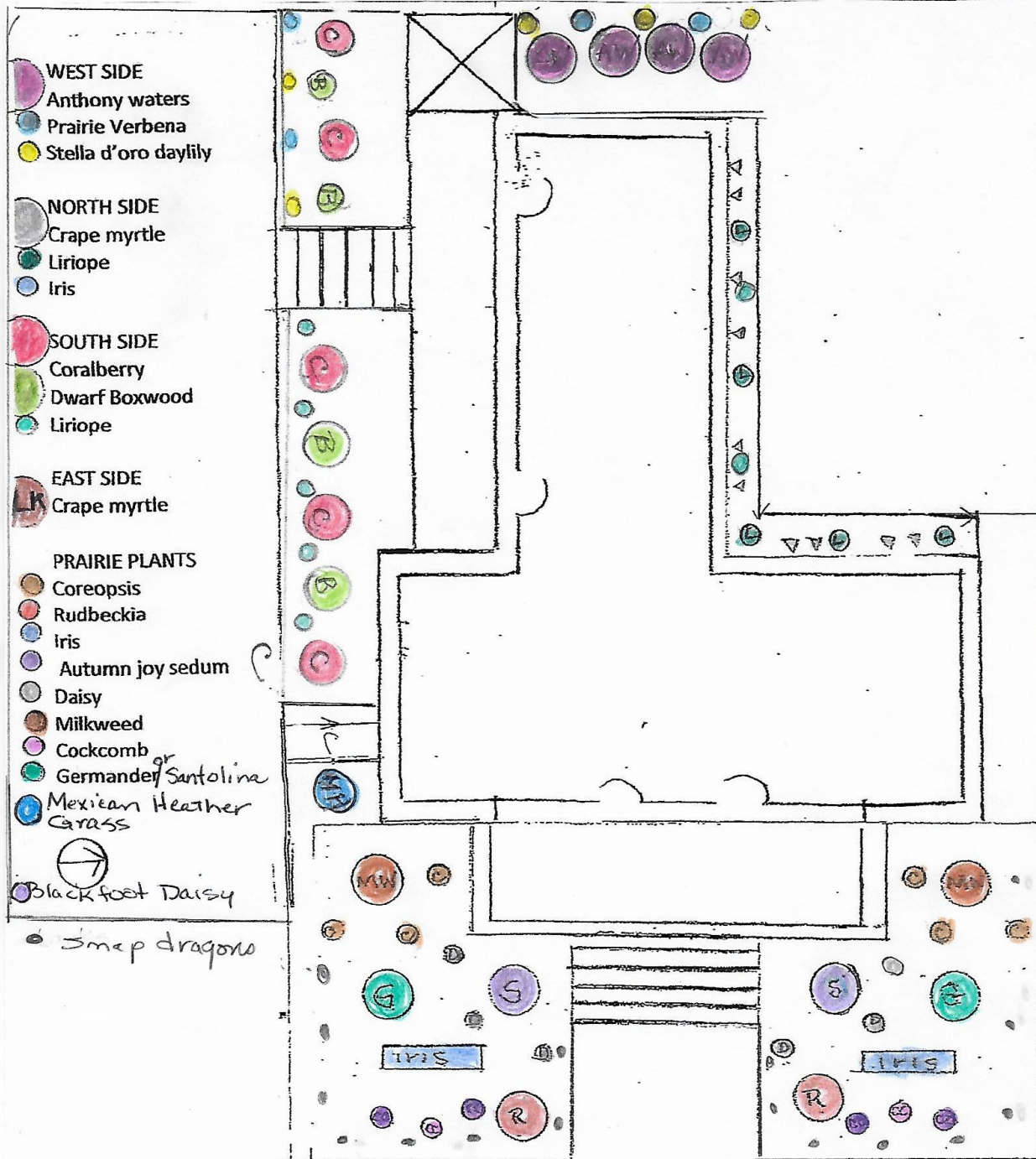
The gardens you see were designed and planted in 2016 by a coalition of Collin County Master Gardeners and Allen Garden Club members and Keep Allen Beautiful.

On the south side of the house in the plan is Coralberry and dwarf Boxwood shrubs were chosen because they are native plants and also reflect the type of shrubs that could have been planted in the 1870's. On the front side of the house are Daylilies and Prairie flowers which were chosen to reflect what a Prairie garden might have looked like in the late 1800's and are drought tolerant plants which contribute to the sustainability of the garden and the environment.

On the north side of the house are Irises that were donated by Allen resident, Susan Bernard and Hydrangeas Endless Summer were taken from the north side of the Christian Church because they were not tolerating the extreme heat.



Wetsel House Landscape Plan 2016

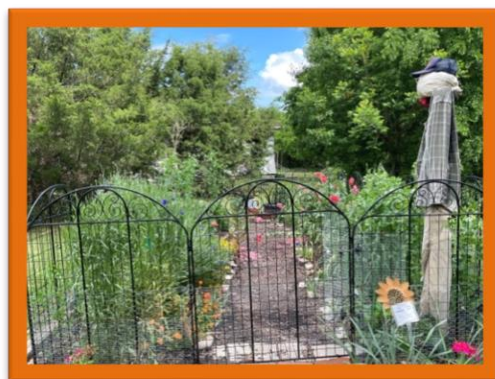


INSTALLATION OF KITCHEN GARDEN 2017

The installation of the Kitchen garden was done by the Young Men Service League. This organization is a 501(c)(3) non-profit national organization for young men in grades 9-12; is a structured program for mothers and their sons to promote the development of young men into community leaders through leadership involvement, charitable and community service, cultural experiences, and protocol education. The Young Men Service League installed the landscape timbers, compost and mulch. Initial planting was done by Allen Garden club.

Later the fence was donated by Edi Fife and installed by CCMGA. It is a great fence as it looks extremely beautiful and helps keep out the rabbits and other wildlife out of the garden.

Today there is an herb garden that has oregano, English tyme, onions, pineapple sage, chives, tarragon, and dill. The vegetables growing in the garden are: Jalapeno, snap peas, bush beans, purple contender, Cherokee wax, Queen Lake, tomato, Red creole, onion, and Swiss chard. The flowers in the garden are Ranunculus, Larkspur, Poppy, Dahlia, Pansy, Bachelor button, and Geranium, to name a few.



WILDFLOWER GARDEN

In 2016 it was decided it would be nice to plant a wildflower garden at the village. The site selected was the open space to the east of the Allen Christian Church. The method of planting the seeds was to make seed bombs which are little ball made up of wildflower seeds mixed with humus or compost, clay, and formed into balls. This ancient process was reinvented and advanced by Masanobu Fukuoka, a Japanese farmer and philosopher born early in the beginning of the 20th century.

The compost offers nutrients for the seeds to germinate and grow strong during their infancy and the clay binds the seed bomb making it hard enough not to break when it hits the ground.

With a little a little help from Mother Nature, something as small as a seed bomb has the potential to improve the natural structure of an area in one fell swoop.

A part from the fact they are fun to make, they actually work and it's so exciting when you see the first shoot come through the ground!

- 3 parts compost
- 2 parts clay
- 1 part Native Wildflower seeds
- Water

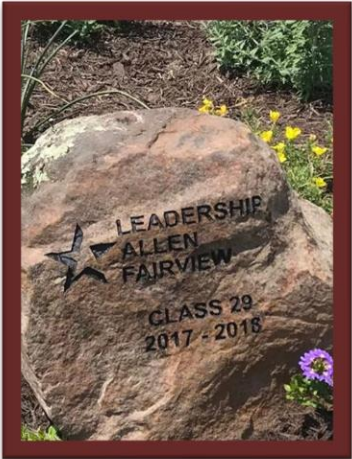


ALLEN HERITAGE VILLAGE ENTRY OVAL BED 2018

Leadership Allen-Fairview 2017-18 chose the oval at the Allen Heritage Village as their class project. It was a huge project for them but they did a wonderful job raising money for this project, planning the logistics, preparing the beds and planting the garden.

The Master Gardeners met with the group and discussed the best plants for this project. Maryibeth Flowers took our suggestions and came out with the final plan.

City provided the sign for the entrance.



CITY INSTALLATION OF THE REST ROOMS

The rest rooms are an asset to the village. They were built in just a few weeks.

The garden was designed by Denise Webre, Allen Garden Club President. She chose dwarf Abelia, Rock rose, Autumn sage, Cat mint, and Iris. CCMGA installed drip hoses to water as needed until garden was established. Since all plants are Earth Kind they have established well and do not need additional water.



FUTURE GARDEN OPPORTUNITIES

There are several new structures being built at the Heritage Village that represent new opportunities for garden planning and installation. These are:

- The Lane-Carroll House is being restored and will need to be landscaped with a Kitchen garden.
- The Pavilion is completed and ready for use and landscaping in the future.
- The back of the restrooms could use additional landscaping.
- The back of the Allen Christian Church needs additional beds to make it more attractive from the Pavilion.

